



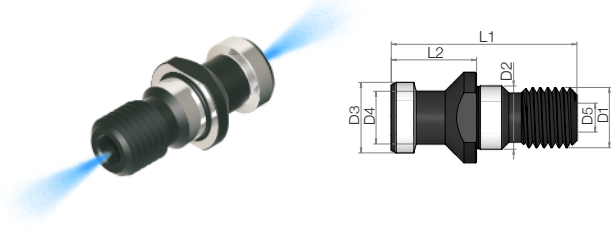
Accessories

Pull Studs	5
ER collets DIN 6499	10
ER collets DIN 6499 - <i>Extra precision</i>	14
ER collets DIN 6499 - <i>Rubber sealed</i>	18
ER collets with internal square DIN 6499	22
Clamping nuts ER DIN 6499	24
Clamping nuts ER MINI DIN 6499	24
ER wrench	24
ER wrench MINI	24
Adjusting screw for ER collet chuck	25
Adjusting screw for SHRINK FIT tool holders	25
Locking screw for Weldon DIN1835B	26
Locking screw for Weldon Form Line DIN1835B	26
Coolant tube - HSK	27
Coolant tube - PSC	27
Wrench for coolant tube - HSK	27
Wrench for coolant tube - PSC	27
Driving ring for COMBI shell mill holders	28
Cross screw for shell mill holders	28
Driving key for COMBI shell mill holders	28
Driving key for shell mill holders	28
Tapping head quick change WELDON	29
Tapping head quick change MK Form B	29
Tapping head quick change MK Form A	29
Quick change inserts with safety coupling	30
THERMO Shrink fit extensions	32
ER collet chuck DIN6499 MINI extensions	33
Assembly block	33

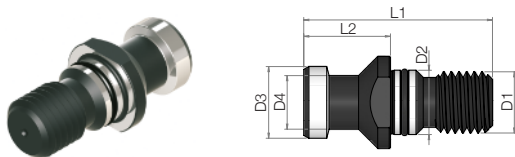


Pull Studs

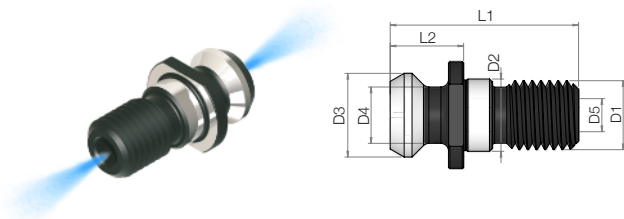
Hardness: 58±2 HRc

Material: 1000N/mm² tensile strength steel

SK	Standard	D1	D2	D3	D4	D5	L1	L2	Code
30	DIN69872A	M12	13	13	9	4	44	24	PV12.DA
40	DIN69872A	M16	17	19	14	7	54	26	PV16.DA
45	DIN69872A	M20	21	23	17	9.5	65	30	PV20.DA
50	DIN69872A	M24	25	28	21	11.5	74	34	PV24.DA



SK	Standard	D1	D2	D3	D4	D5	L1	L2	Code
30	DIN69872B	M12	13	13	9	-	44	24	PV12.DB
40	DIN69872B	M16	17	19	14	-	54	26	PV16.DB
45	DIN69872B	M20	21	23	17	-	65	30	PV20.DB
50	DIN69872B	M24	25	28	21	-	74	34	PV24.DB

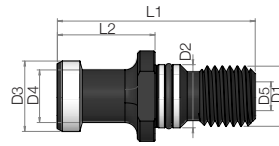


SK	Standard	D1	D2	D3	D4	D5	L1	L2	Code
40	ISO7388IIB	M16	17	18.95	12.95	7.35	44.55	16.4	PV16.IB
50	ISO7388IIB	M24	25	29.10	19.60	11.50	65.50	25.6	PV24.IB
40	ISO7388IIA	M16	17	18.95	12.95	-	44.55	16.4	PV16.IA
50	ISO7388IIA	M24	25	29.10	19.60	-	65.50	25.6	PV24.IA

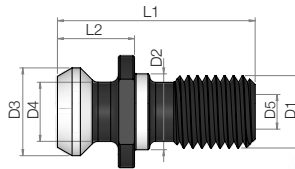
Pull Studs

Hardness: 58±2 HRc

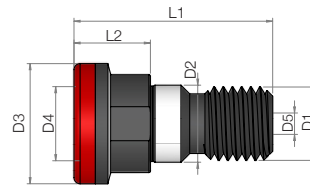
Material: 1000N/mm² tensile strength steel



SK	Standard	D1	D2	D3	D4	D5	L1	L2	Code
40	JIS-B-6339	M16	17	19	14	4	54	29	PV16.J40
40	JIS-B-6339	M16	17	19	14	5.5	54	29	PV16.J55
40	JIS-B-6339	M16	17	19	14	4/5.5	54	29	PV16.J45
40	JIS-B-6339	M16	17	19	14	7	54	29	PV16.J70

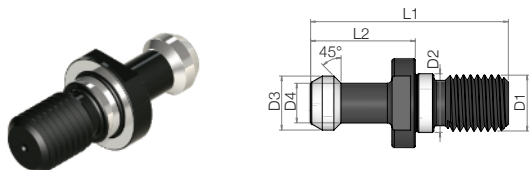


SK	Standard	D1	D2	D3	D4	D5	L1	L2	Code
40	CAT metric	M16	17	18.80	12.45	7	41.26	16.26	PV16.CAT
50	CAT metric	M24	25	28.95	20.90	10	65.40	25.40	PV24.CAT
40	CAT FADAL	M16	17	18.90	12.50	7	44.10	19.10	PV16.CAT/F



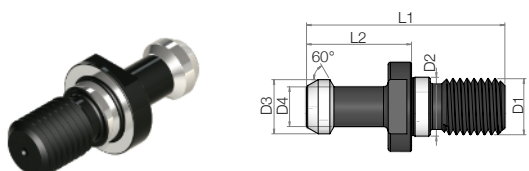
SK	Standard	D1	D2	D3	D4	D5	L1	L2	Code
40	DIN 2080	M16	17	25	M16	7	53	25	PV16.OTT/N
50	DIN 2080	M24	25	39.30	M24	7	65	25	PV24.OTT/N

Pull Studs

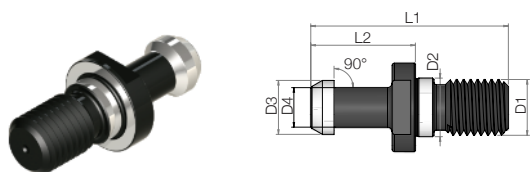


Hardness: 58±2 HRc
Material: 1000N/mm² tensile strength steel

SK	Standard	D1	D2	D3	D4	D5	L1	L2	Code
30	MAS-BT 45°	M12	12.5	11	7	-	43	23	PV12.BT45
40	MAS-BT 45°	M16	17	15	10	-	60	35	PV16.BT45
50	MAS-BT 45°	M24	25	23	17	-	85	45	PV24.BT45



SK	Standard	D1	D2	D3	D4	D5	L1	L2	Code
30	MAS-BT 60°	M12	12.5	11	7	-	43	23	PV12.BT60
40	MAS-BT 60°	M16	17	15	10	-	60	35	PV16.BT60
50	MAS-BT 60°	M24	25	23	17	-	85	45	PV24.BT60

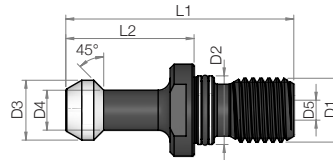


SK	Standard	D1	D2	D3	D4	D5	L1	L2	Code
30	MAS-BT 90°	M12	12.5	11	7	-	43	23	PV12.BT90
40	MAS-BT 90°	M16	17	15	10	-	60	35	PV16.BT90
50	MAS-BT 90°	M24	25	23	17	-	85	45	PV24.BT90

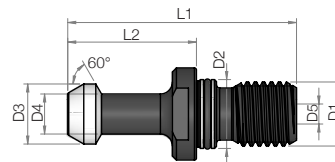
Pull Studs

Hardness: 58±2 HRc

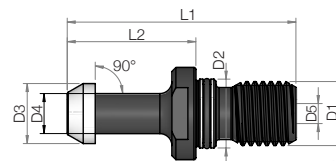
Material: 1000N/mm² tensile strength steel



SK	Standard	D1	D2	D3	D4	D5	L1	L2	Code
30	MAS-BT 45°	M12	12.5	11	7	3	43	23	PV12.BT45C
40	MAS-BT 45°	M16	17	15	10	5	60	35	PV16.BT45C
50	MAS-BT 45°	M24	25	23	17	6	85	45	PV24.BT45C

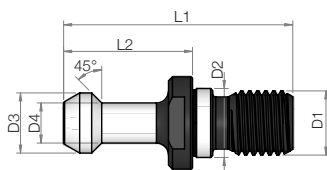


SK	Standard	D1	D2	D3	D4	D5	L1	L2	Code
30	MAS-BT 60°	M12	12.5	11	7	3	43	23	PV12.BT60C
40	MAS-BT 60°	M16	17	15	10	5	60	35	PV16.BT60C
50	MAS-BT 60°	M24	25	23	17	6	85	45	PV24.BT60C



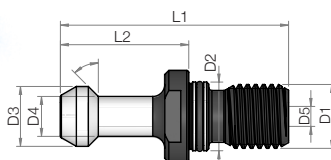
SK	Standard	D1	D2	D3	D4	D5	L1	L2	Code
30	MAS-BT 90°	M12	12.5	11	7	3	43	23	PV12.BT90C
40	MAS-BT 90°	M16	17	15	10	5	60	35	PV16.BT90C
50	MAS-BT 90°	M24	25	23	17	6	85	45	PV24.BT90C

Pull Studs

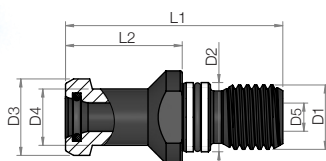


Hardness: 58±2 HRc
Material: 1000N/mm² tensile strength steel

SK	Standard	D1	D2	D3	D4	D5	L1	L2	Code
40	MAS-BT 45° (L1=57.15)	M16	17	15	10	-	57.15	32.15	PV16.BT45X



SK	Standard	D1	D2	D3	D4	D5	L1	L2	Code
40	MAS-BT 45° (L1=57.15)	M16	17	15	10	5	57.15	32.15	PV16.BT45XC



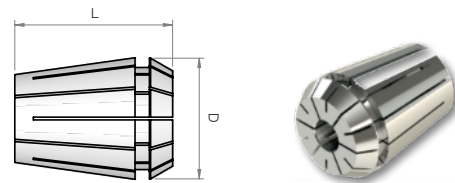
SK	Standard	D1	D2	D3	D4	D5	L1	L2	Code
40	JIS-B-6339	M16	17	19	14	7	54	29	PV16.MORI

ER collets DIN 6499

ER	D	L
11 (424 E)	11.5	18

ER 11

Ø	Code
1	ER11.010
1.5	ER11.015
2	ER11.020
2.5	ER11.025
3	ER11.030
3.5	ER11.035
4	ER11.040
4.5	ER11.045
5	ER11.050
5.5	ER11.055
6	ER11.060
6.5	ER11.065
7	ER11.070



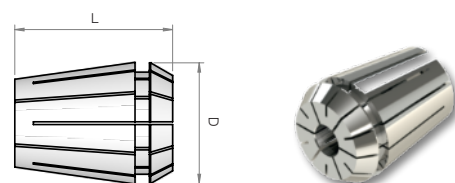
Ø	Code
SET Ø 1,2,3,4,5,6,7 (7 pcs)	ER11.SET



ER	D	L
16 (426 E)	17	27

ER 16

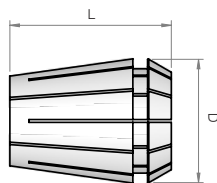
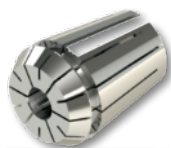
Ø	Code
1	ER16.010
1.5	ER16.015
2	ER16.020
2.5	ER16.025
3	ER16.030
3.5	ER16.035
4	ER16.040
4.5	ER16.045
5	ER16.050
5.5	ER16.055
6	ER16.060
6.5	ER16.065
7	ER16.070
7.5	ER16.075
8	ER16.080
8.5	ER16.085
9	ER16.090
9.5	ER16.095
10	ER16.100



Ø	Code
SET Ø 1,2,3,4,5,6,7,8,9,10 (10 pcs)	ER16.SET



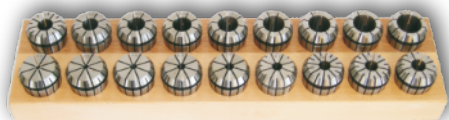
ER collets DIN 6499



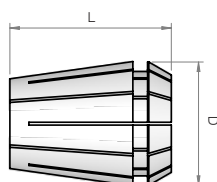
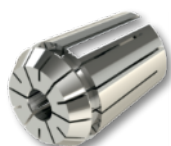
ER 20

ER	D	L
20 (428 E)	21	31.5

Ø	Code
SET Ø 2,3,4,5,6,7,8,9,10,11,12,13 (12 pcs)	ER20.SET



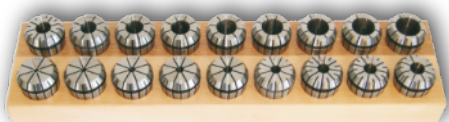
Ø	Code
1	ER20.010
2	ER20.020
3	ER20.030
4	ER20.040
5	ER20.050
6	ER20.060
7	ER20.070
8	ER20.080
9	ER20.090
10	ER20.100
11	ER20.110
12	ER20.120
13	ER20.130



ER 25

ER	D	L
25 (430 E)	26	34

Ø	Code
SET Ø 2,3,4,5,6,7,8,9,10,11,12,13,14,15,16 (15 pcs)	ER25.SET

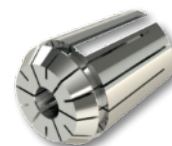
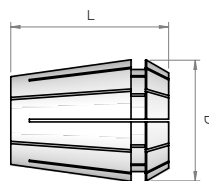


Ø	Code
1	ER25.010
2	ER25.020
3	ER25.030
4	ER25.040
5	ER25.050
6	ER25.060
7	ER25.070
8	ER25.080
9	ER25.090
10	ER25.100
11	ER25.110
12	ER25.120
13	ER25.130
14	ER25.140
15	ER25.150
16	ER25.160

ER collets DIN 6499

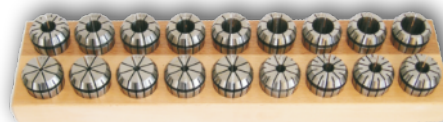
ER	D	L
32 (470 E)	33	40

ER 32

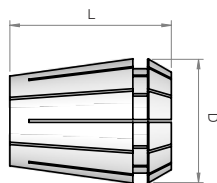
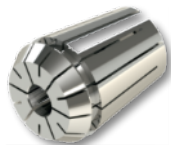


Ø	Code
2	ER32.020
3	ER32.030
4	ER32.040
5	ER32.050
6	ER32.060
7	ER32.070
8	ER32.080
9	ER32.090
10	ER32.100
11	ER32.110
12	ER32.120
13	ER32.130
14	ER32.140
15	ER32.150
16	ER32.160
17	ER32.170
18	ER32.180
19	ER32.190
20	ER32.200

Ø	Code
SETØ3,4,5,6,7,8,9,10,11,12,13,14, 15,16,17,18,19,20 (18 pcs)	ER32.SET



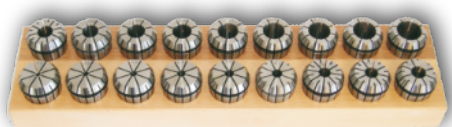
ER collets DIN 6499



ER 40

ER	D	L
40 (472 E)	41	46

Ø	Code
SET	ER40.SET
Ø4,5,6,7,8,9,10,11,12,13,14,15,16,17, 18,19,20,21,22,23,24,25,26 (23 pcs)	



Ø	Code
3	ER40.030
4	ER40.040
5	ER40.050
6	ER40.060
7	ER40.070
8	ER40.080
9	ER40.090
10	ER40.100
11	ER40.110
12	ER40.120
13	ER40.130
14	ER40.140
15	ER40.150
16	ER40.160
17	ER40.170
18	ER40.180
19	ER40.190
20	ER40.200
21	ER40.210
22	ER40.220
23	ER40.230
24	ER40.240
25	ER40.250
26	ER40.260

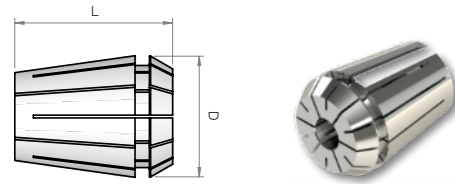
ER collets DIN 6499

Extra precision

ER	D	L
11 (424 E)	11.5	18

ER 11

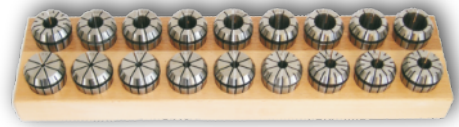
Ø	Code
1	ER11.010EP
1.5	ER11.015EP
2	ER11.020EP
2.5	ER11.025EP
3	ER11.030EP
3.5	ER11.035EP
4	ER11.040EP
4.5	ER11.045EP
5	ER11.050EP
5.5	ER11.055EP
6	ER11.060EP
6.5	ER11.065EP
7	ER11.070EP



Extra precision
Radial runout < 0.005 mm



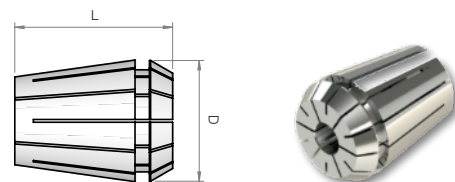
Ø	Code
SET Ø 1,2,3,4,5,6,7 (7 pcs)	ER11.SET.EP



ER	D	L
16 (426 E)	17	27

ER 16

Ø	Code
1	ER16.010EP
1.5	ER16.015EP
2	ER16.020EP
2.5	ER16.025EP
3	ER16.030EP
3.5	ER16.035EP
4	ER16.040EP
4.5	ER16.045EP
5	ER16.050EP
5.5	ER16.055EP
6	ER16.060EP
6.5	ER16.065EP
7	ER16.070EP
7.5	ER16.075EP
8	ER16.080EP
8.5	ER16.085EP
9	ER16.090EP
9.5	ER16.095EP
10	ER16.100EP



Extra precision
Radial runout < 0.005 mm

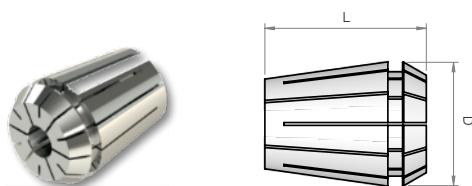


Ø	Code
SET Ø 1,2,3,4,5,6,7,8,9,10 (10 pcs)	ER16.SET.EP



ER collets DIN 6499

Extra precision



Extra precision
Radial runout < 0.005 mm

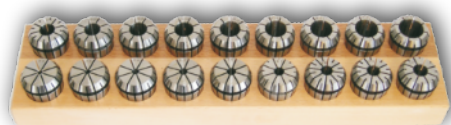


Ø

Code

SET Ø 2,3,4,5,6,7,8,9,10,11,12,13
(12 pcs)

ER20.SET.EP



ER 20

ER	D	L
20 (428 E)	21	31.5

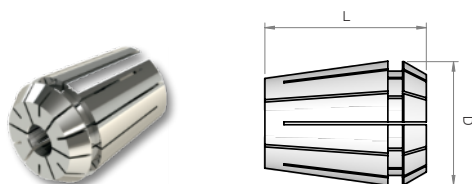
Ø

Code

2	ER20.020EP
3	ER20.030EP
4	ER20.040EP
5	ER20.050EP
6	ER20.060EP
7	ER20.070EP
8	ER20.080EP
9	ER20.090EP
10	ER20.100EP
11	ER20.110EP
12	ER20.120EP
13	ER20.130EP

ER 25

ER	D	L
25 (430 E)	26	34



Extra precision
Radial runout < 0.005 mm

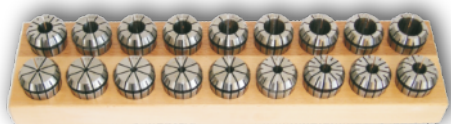


Ø

Code

SET Ø
2,3,4,5,6,7,8,9,10,11,12,13,14,15,
16 (15 pcs)

ER25.SET.EP



Ø

Code

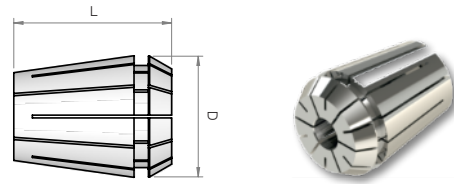
2	ER25.020EP
3	ER25.030EP
4	ER25.040EP
5	ER25.050EP
6	ER25.060EP
7	ER25.070EP
8	ER25.080EP
9	ER25.090EP
10	ER25.100EP
11	ER25.110EP
12	ER25.120EP
13	ER25.130EP
14	ER25.140EP
15	ER25.150EP
16	ER25.160EP

ER collets DIN 6499

Extra precision

ER	D	L
32 (470 E)	33	40

ER 32

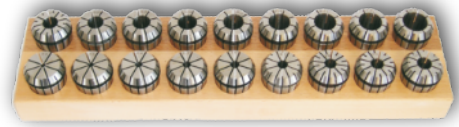


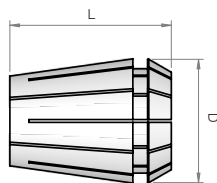
Ø	Code
3	ER32.030EP
4	ER32.040EP
5	ER32.050EP
6	ER32.060EP
7	ER32.070EP
8	ER32.080EP
9	ER32.090EP
10	ER32.100EP
11	ER32.110EP
12	ER32.120EP
13	ER32.130EP
14	ER32.140EP
15	ER32.150EP
16	ER32.160EP
17	ER32.170EP
18	ER32.180EP
19	ER32.190EP
20	ER32.200EP

Extra precision
Radial runout < 0.005 mm



Ø	Code
SETØ3,4,5,6,7,8,9,10,11,12,13,14, 15,16,17,18,19,20 (18 pcs)	ER32.SET.EP

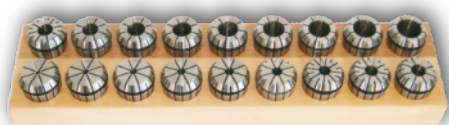




Extra precision
Radial runout < 0.005 mm



Ø	Code
SET Ø4,5,6,7,8,9,10,11,12,13,14,15,16,17, 18,19,20,21,22,23,24,25,26 (23 pcs)	ER40. SET.EP



ER collets DIN 6499

Extra precision

ER 40

ER	D	L
40 (472 E)	41	46

Ø	Code
4	ER40.040EP
5	ER40.050EP
6	ER40.060EP
7	ER40.070EP
8	ER40.080EP
9	ER40.090EP
10	ER40.100EP
11	ER40.110EP
12	ER40.120EP
13	ER40.130EP
14	ER40.140EP
15	ER40.150EP
16	ER40.160EP
17	ER40.170EP
18	ER40.180EP
19	ER40.190EP
20	ER40.200EP
21	ER40.210EP
22	ER40.220EP
23	ER40.230EP
24	ER40.240EP
25	ER40.250EP
26	ER40.260EP

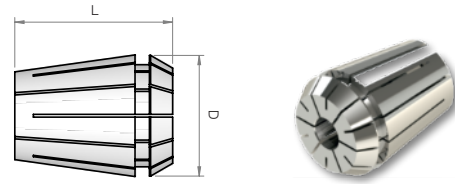
ER collets DIN 6499

Rubber sealed

ER	D	L
16 (426 E)	17	27

ER 16

Ø	Code
3	ER16.030SC
4	ER16.040SC
5	ER16.050SC
6	ER16.060SC
7	ER16.070SC
8	ER16.080SC
9	ER16.090SC
10	ER16.100SC



Rubber sealed
Through-tool coolant only



Ø	Code
SET Ø 3,4,5,6,7,8,9,10 (8 pcs)	ER16.SET.SC



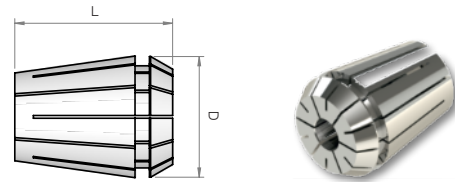
ER collets DIN 6499

Rubber sealed

ER	D	L
20 (428 E)	21	31.5

ER 20

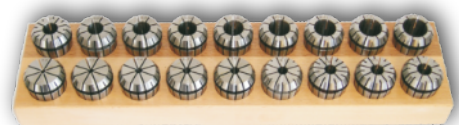
Ø	Code
3	ER20.030SC
4	ER20.040SC
5	ER20.050SC
6	ER20.060SC
7	ER20.070SC
8	ER20.080SC
9	ER20.090SC
10	ER20.100SC
11	ER20.110SC
12	ER20.120SC
13	ER20.130SC

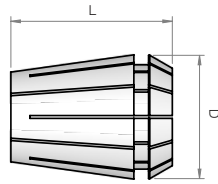


Rubber sealed
Through-tool coolant only



Ø	Code
SET Ø 3,4,5,6,7,8,9,10,11,12,13 (11 pcs)	ER20.SET.SC





Rubber sealed
Through-tool coolant only



Ø	Code
SET Ø	
3,4,5,6,7,8,9,10,11,12,13,14,15,16	ER25.SET.SC
(12 pcs)	



ER collets DIN 6499

Rubber sealed

ER 25

ER	D	L
25 (430 E)	26	34

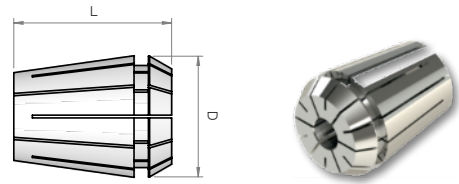
Ø	Code
3	ER25.030SC
4	ER25.040SC
5	ER25.050SC
6	ER25.060SC
7	ER25.070SC
8	ER25.080SC
9	ER25.090SC
10	ER25.100SC
11	ER25.110SC
12	ER25.120SC
13	ER25.130SC
14	ER25.140SC
15	ER25.150SC
16	ER25.160SC

ER collets DIN 6499

Rubber sealed

ER	D	L
32 (470 E)	33	40

ER 32



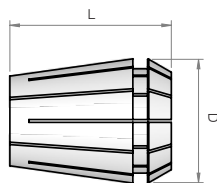
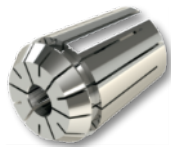
Ø	Code
3	ER32.030SC
4	ER32.040SC
5	ER32.050SC
6	ER32.060SC
7	ER32.070SC
8	ER32.080SC
9	ER32.090SC
10	ER32.100SC
11	ER32.110SC
12	ER32.120SC
13	ER32.130SC
14	ER32.140SC
15	ER32.150SC
16	ER32.160SC
17	ER32.170SC
18	ER32.180SC
19	ER32.190SC
20	ER32.200SC

Rubber sealed
Through-tool coolant only



Ø	Code
SETØ3,4,5,6,7,8,9,10,11,12,13,14, 15,16,17,18,19,20 (18 pcs)	ER32.SET.SC

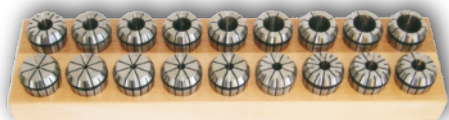




Rubber sealed
Through-tool coolant only



Ø	Code
SET Ø4,5,6,7,8,9,10,11,12,13,14,15,16,17, 18,19,20,21,22,23,24,25,26 (23 pcs)	ER40. SET.SC



ER collets DIN 6499

Rubber sealed

ER 40

ER	D	L
40 (472 E)	41	46

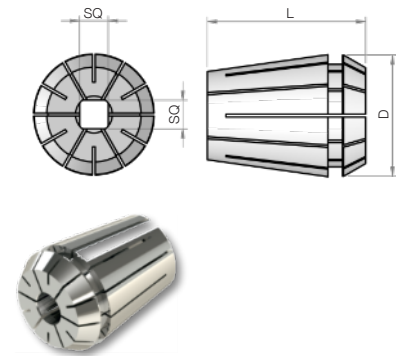
Ø	Code
4	ER40.040SC
5	ER40.050SC
6	ER40.060SC
7	ER40.070SC
8	ER40.080SC
9	ER40.090SC
10	ER40.100SC
11	ER40.110SC
12	ER40.120SC
13	ER40.130SC
14	ER40.140SC
15	ER40.150SC
16	ER40.160SC
17	ER40.170SC
18	ER40.180SC
19	ER40.190SC
20	ER40.200SC
21	ER40.210SC
22	ER40.220SC
23	ER40.230SC
24	ER40.240SC
25	ER40.250SC
26	ER40.260SC

ER collets with internal square DIN 6499

ER	D	L
16	11.5	27.5

ER 16

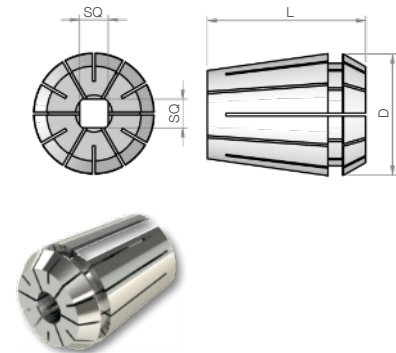
∅	SQ	Code
3.5	2.7	ER16.035x2.7
4	3	ER16.040x3.0
4.5	3.4	ER16.045x3.4
6	4.9	ER16.060x4.9
7	5.5	ER16.070x5.5
8	6.2	ER16.080x6.2



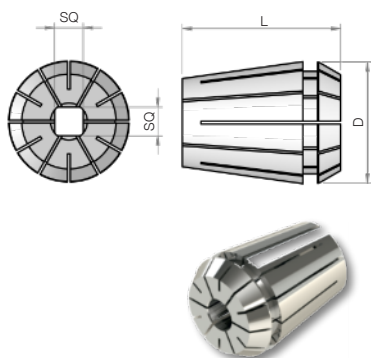
ER	D	L
25	26	34

ER 25

∅	SQ	Code
3.5	2.7	ER25.035x2.7
4	3	ER25.040x3.0
4.5	3.4	ER25.045x3.4
6	4.9	ER25.060x4.9
7	5.5	ER25.070x5.5
8	6.2	ER25.080x6.2
9	7	ER25.090x7.0
10	8	ER25.100x8.0
11	9	ER25.110x9.0
12	9	ER25.120x9.0



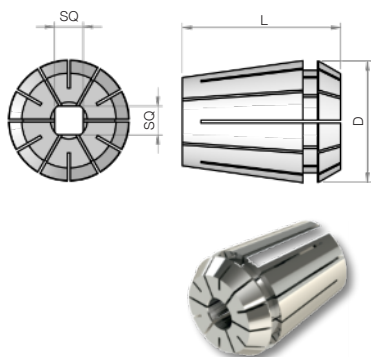
ER collets with internal square DIN 6499



ER 32

ER	D	L
32	33	40

Ø	SQ	Code
3.5	2.7	ER32.035x2.7
4	3	ER32.040x3.0
4.5	3.4	ER32.045x3.4
6	4.9	ER32.060x4.9
7	5.5	ER32.070x5.5
8	6.2	ER32.080x6.2
9	7	ER32.090x7.0
10	8	ER32.100x8.0
11	9	ER32.110x9.0
12	9	ER32.120x9.0
14	11	ER32.140x11.0
16	12	ER32.160x12.0



ER 40

ER	D	L
40	41	46

Ø	SQ	Code
6	4.9	ER40.060x4.9
7	5.5	ER40.070x5.5
8	6.2	ER40.080x6.2
9	7	ER40.090x7.0
10	8	ER40.100x8.0
11	9	ER40.110x9.0
12	9	ER40.120x9.0
14	11	ER40.140x11.0
16	12	ER40.160x12.0
18	14.5	ER40.180x14.5
20	16	ER40.200x16.0

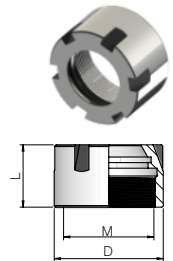
Clamping nuts ER DIN 6499

ER	M	D	L	Code
11	M14x0.75	19	11.3	D6499.ER11
16	M22x1.5	32	17.5	D6499.ER16
20	M25x1.5	35	19	D6499.ER20
25	M32x1.5	42	20	D6499.ER25
32	M40x1.5	50	22.5	D6499.ER32
40	M50x1.5	63	25.5	D6499.ER40



Clamping nuts ER MINI DIN 6499

ER	M	D	L	Code
11	M13x0.75	16	12	D6499.ER11M
16	M19x1	22	18	D6499.ER16M
20	M24x1	28	19	D6499.ER20M
25	M30x1	35	20	D6499.ER25M



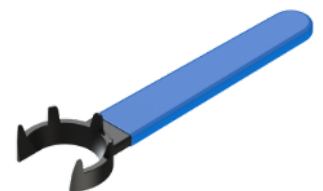
ER wrench

ER	Code
25	KLJ.ER25
32	KLJ.ER32
40	KLJ.ER40



ER wrench MINI

ER	Code
11	K.ER11.M
16	K.ER16.M
20	K.ER20.M
25	K.ER25.M



Adjusting screw for ER collet chuck



ER	M	Code
11	M6x10	VP.ER11
16	M8x15	VP.ER16
20	M10x18	VP.ER20
25	M12x18	VP.ER25
32	M12x18	VP.ER32
40	M12x18	VP.ER40

Adjusting screw for SHRINK FIT tool holders



SF	M	Code
6	M5x10	VP.M05
8	M6x15	VP.M06
10	M8x1x15	VP.M081
12	M10x1x15	VP.M101
14	M10x1x15	VP.M101
16	M12x1x18	VP.M121
18	M12x1x18	VP.M121
20	M16x1x20	VP.M161
25	M16x1x20	VP.M161
32	M16x1x20	VP.M161

Locking screw for Weldon DIN1835B

Weldon	M	Code
6	M6x10	WE.06
8	M8x10	WE.08
10	M10x12	WE.10
12	M12x16	WE.12
14	M12x16	WE.14
16	M14x16	WE.16
18	M14x16	WE.18
20	M16x16	WE.20
25	M18x2x20	WE.25
32	M20x2x20	WE.32
40	M20x2x25	WE.40
50	M24x2x25	WE.50



Locking screw for Weldon Form Line DIN1835B

Weldon	M	Code
6	M6x6	WE.06F
8	M8x7.5	WE.08F
10	M10x8	WE.10F
12	M12x8	WE.12F
14	M12x8.5	WE.14F
16	M14x8.5	WE.16F
18	M14x8.5	WE.18F
20	M16x10	WE.20F
25	M18x2x11.5	WE.25F
32	M20x2x12	WE.32F



Coolant tube - HSK



HSK	M	Code
32	M10x1	CT32.M10
40	M12x1	CT40.M12
50	M16x1	CT50.M16
63	M18x1	CT63.M18
80	M20x1.5	CT80.M20
100	M24x1.5	CT100.M24

Coolant tube - PSC



PSC	M	Code
32	M12x1.5	CT.C3.M12
40	M14x1.5	CT.C4.M14
50	M16x1.5	CT.C5.M16
63	M20x2	CT.C6.M20
80	M20x2	CT.C8.M20

Wrench for coolant tube - HSK



HSK	Code
32	CTS.32
40	CTS.40
50	CTS.50
63	CTS.63
80	CTS.80
100	CTS.100

Wrench for coolant tube - PSC



PSC	Code
32	CTS.C3
40	CTS.C4
50	CTS.C5
63	CTS.C6
80	CTS.C8

Driving ring for COMBI shell mill holders

KD	Code
16	D6366.16
22	D6366.22
27	D6366.27
32	D6366.32
40	D6366.40
50	D6366.50



Cross screw for shell mill holders

KD	Code
16	D6367.M08
22	D6367.M10
27	D6367.M12
32	D6367.M16
40	D6367.M20
50	D6367.M24
60	D6367.M30



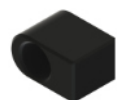
Driving key for COMBI shell mill holders

KD	Code
16	UP.04420
22	UP.06622
27	UP.07725
32	UP.08730
40	UP.10832
50	UP.12836



Driving key for shell mill holders

AD	Code
16	PK.16
22	PK.22
27	PK.27
32	PK.32
40	PK.40
50	PK.50



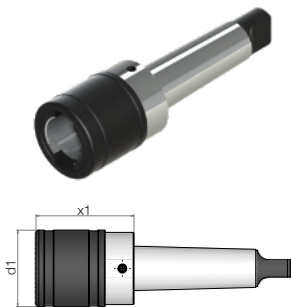
Tapping head quick change WELDON



Cylindrical shaft	Tap size	Compensation	Insert size	x1	d1	Code
WE20	M3-M14	±7.5	1	39	36	GN12.W20.039
WE25	M3-M14	±7.5	1	39	36	GN12.W25.039
WE25	M5-M22	±12.5	2	63	53	GN20.W25.063
WE32	M5-M22	±12.5	2	63	53	GN20.W32.063
WE32	M14-M33	±20	3	124	78	GN33.W32.124
WE40	M22-M48	±22.5	4	126	96	GN33.W40.126

With length compensation in compression and tension

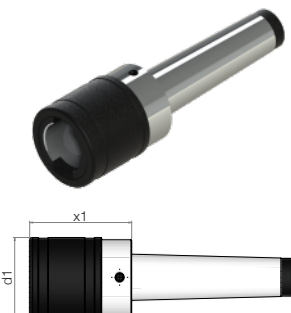
Tapping head quick change MK Form B



MK Form B	Tap size	Compensation	Insert size	x1	d1	Code
2	M3-M14	±7.5	1	46	36	GN12.M2B.046
3	M3-M14	±7.5	1	46	36	GN12.M3B.046
3	M5-M22	±12.5	2	70	53	GN20.M3B.070
4	M5-M22	±12.5	2	71	53	GN20.M4B.071
4	M14-M33	±20	3	104	78	GN33.M4B.104
5	M14-M33	±20	3	104	78	GN33.M5B.104

With length compensation in compression and tension

Tapping head quick change MK Form A

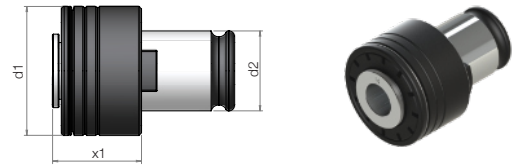


MK Form A	Tap size	Compensation	Insert size	x1	d1	Code
2	M3-M14	±7.5	1	46	36	GN12.M2A.046
3	M3-M14	±7.5	1	46	36	GN12.M3A.046
3	M8-M20	±12.5	2	70	53	GN20.M3A.070
4	M8-M20	±12.5	2	71	53	GN20.M4A.071
4	M14-M33	±20	3	104	78	GN33.M4A.104
5	M14-M33	±20	3	104	78	GN33.M5A.104

With length compensation in compression and tension

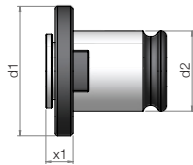
Quick change inserts with safety coupling

Size	d1	d2	x1
1 (M3-M12)	32	19	25
2 (M8-M20)	50	31	34
3 (M14-M33)	72	48	45
4 (M22-M48)	95	60	68



Size	Ø	SQ	Code
1 (M3-M12)	3.5	2.7	SES0312.M03
	4	3.0	SES0312.M35
	4.5	3.4	SES0312.M04
	6	4.9	SES0312.M05
	6	4.9	SES0312.M06
	6	4.9	SES0312.M08
	7	5.5	SES0312.M10
	8	6.2	SES0312.M08A
	9	7.0	SES0312.M12
	10	8.0	SES0312.M10A
2 (M8-M20)	11	9.0	SES0312.M14
	6	4.9	SES0820.M08
	7	5.5	SES0820.M10
	8	6.2	SES0820.M08A
	9	7.0	SES0820.M12
	10	8.0	SES0820.M10A
	11	9.0	SES0820.M14
	12	9.0	SES0820.M16
3 (M14-M33)	14	11.0	SES0820.M18
	16	12.0	SES0820.M20
	18	14.5	SES0820.M24
	11	9.0	SES1433.M14
	12	9.0	SES1433.M16
	14	11.0	SES1433.M18
	16	12.0	SES1433.M20
	18	14.5	SES1433.M22
20	16.0	SES1433.M27	
4 (M22-M48)	22	18.0	SES1433.M30
	25	20.0	SES1433.M33
	28	22.0	SES1433.M36
	18	14.5	SES2248.M24
	20	16.0	SES2248.M27
	22	18.0	SES2248.M30
	25	20.0	SES2248.M33
28	22.0	SES2248.M36	
	32	24.0	SES2248.M42
	36	29.0	SES2248.M45

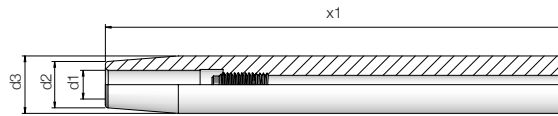
Quick change inserts without safety coupling



Size	d1	d2	x1
1 (M3-M12)	32	19	7
2 (M8-M20)	50	31	11
3 (M14-M33)	72	48	14
4 (M22-M48)	95	60	42

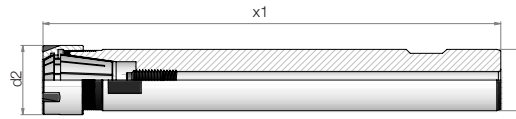
Size	Ø	SQ	Code
1 (M3-M12)	3.5	2.7	SE0312.M03
	4	3.0	SE0312.M35
	4.5	3.4	SE0312.M04
	6	4.9	SE0312.M05
	6	4.9	SE0312.M06
	6	4.9	SE0312.M08
	7	5.5	SE0312.M10
	8	6.2	SE0312.M08A
	9	7.0	SE0312.M12
	10	8.0	SE0312.M10A
2 (M8-M20)	11	9.0	SE0312.M14
	6	4.9	SE0820.M08
	7	5.5	SE0820.M10
	8	6.2	SE0820.M08A
	9	7.0	SE0820.M12
	10	8.0	SE0820.M10A
	11	9.0	SE0820.M14
	12	9.0	SE0820.M16
3 (M14-M33)	14	11.0	SE0820.M18
	16	12.0	SE0820.M20
	18	14.5	SE0820.M24
	11	9.0	SE1433.M14
	12	9.0	SE1433.M16
	14	11.0	SE1433.M18
	16	12.0	SE1433.M20
	18	14.5	SE1433.M22
4 (M22-M48)	20	16.0	SE1433.M27
	22	18.0	SE1433.M30
	25	20.0	SE1433.M33
	28	22.0	SE1433.M36
	18	14.5	SE2248.M24
	20	16.0	SE2248.M27
	22	18.0	SE2248.M30
	25	20.0	SE2248.M33
	28	22.0	SE2248.M36
	32	24.0	SE2248.M42
	36	29.0	SE2248.M45

THERMO Shrink fit extensions



d3	d1	d2	x1	Code
12	3	9	80	SF03.C12.080
12	3	9	120	SF03.C12.120
12	3	9	160	SF03.C12.160
12	4	10	80	SF04.C12.080
12	4	10	120	SF04.C12.120
12	4	10	160	SF04.C12.160
16	3	9	80	SF03.C16.080
16	3	9	120	SF03.C16.120
16	3	9	160	SF03.C16.160
16	4	10	80	SF04.C16.080
16	4	10	120	SF04.C16.120
16	4	10	160	SF04.C16.160
16	5	11	80	SF05.C16.080
16	5	11	120	SF05.C16.120
16	5	11	160	SF05.C16.160
16	6	12	80	SF06.C16.080
16	6	12	120	SF06.C16.120
16	6	12	160	SF06.C16.160
20	6	12	120	SF06.C20.120
20	6	12	160	SF06.C20.160
20	6	12	200	SF06.C20.200
20	8	16	120	SF08.C20.120
20	8	16	160	SF08.C20.160
20	8	16	200	SF08.C20.200
20	10	16	120	SF10.C20.120
20	10	16	160	SF10.C20.160
20	10	16	200	SF10.C20.200
20	12	18	120	SF12.C20.120
20	12	18	160	SF12.C20.160
20	12	18	200	SF12.C20.200
25	12	18	120	SF12.C25.120
25	12	18	160	SF12.C25.160
25	12	18	200	SF12.C25.200
25	14	20	120	SF14.C25.120
25	14	20	160	SF14.C25.160
25	14	20	200	SF14.C25.200
25	16	25	120	SF16.C25.120
25	16	25	160	SF16.C25.160
25	16	25	200	SF16.C25.200

ER collet chuck DIN6499 MINI extensions



d1	ER	Range	x1	d2	Code
16	ER11	0.5 - 7	100	16	ER11.C16.100M
16	ER11	0.5 - 7	150	16	ER11.C16.150M
16	ER11	0.5 - 7	200	16	ER11.C16.200M
20	ER16	0.5 - 10	100	22	ER16.C20.100M
20	ER16	0.5 - 10	150	22	ER16.C20.150M
20	ER16	0.5 - 10	200	22	ER16.C20.200M
25	ER20	1 - 13	100	28	ER20.C25.100M
25	ER20	1 - 13	150	28	ER20.C25.150M
25	ER20	1 - 13	200	28	ER20.C25.200M
32	ER25	1 - 16	100	35	ER25.C32.100M
32	ER25	1 - 16	150	35	ER25.C32.100M
32	ER25	1 - 16	200	35	ER25.C32.100M

Assembly block



Cone	Code
SK30-BT30-HSK50-C5	MB30.D50
SK40-BT40-HSK63-C6	MB40.D63
SK50-BT50-HSK100-C10	MB50.D100



SAB



Find additional information and
product catalogues

www.sab.hr

SAB d.o.o.
Podborska 1b / 43500 Daruvar
tel. + 385 43 675 850
fax. + 385 43 334 700
sab@sab.hr / www.sab.hr

Note: Product photos and illustrations are not binding. Product descriptions, technical specifications and dimensions are binding only when explicitly agreed upon. We reserve right to make technical modifications as well as price changes. We take no liability for print or type errors. Only our terms and conditions are valid. 02/2024