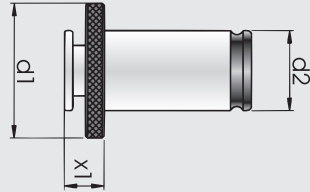


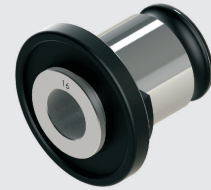
Držači ureznika bez sigurnosne spojke (SE) **SAB**

Schnellwechsel-Einsätze ohne sicherheitskupplung (SE)
 Quick-change inserts without safety coupling (SE)
 Meches a serrage rapide sans couplage de securite (SE)



Veličina

Große Size Grandeur	d1	d2	x1
1 (M3-M14)	30	19	7
2 (M8-M20)	46	31	11
3 (M14-M33)	68	48	14
4 (M22-M48)	73	60	42



Veličina	Ø (mm)	□ (mm)	code
Große	3,5	2,7	SE0312.M03
Size			
Grandeur	4	3,0	SE0312.M35
1 (M3-M14)	4,5	3,4	SE0312.M04
	6	4,9	SE0312.M05
	6	4,9	SE0312.M06
	6	4,9	SE0312.M08
	7	5,5	SE0312.M10
	8	6,2	SE0312.M8A
	9	7,0	SE0312.M12
	10	8,0	SE0312.M10A
	11	9,0	SE0312.M14

Veličina	Ø (mm)	□ (mm)	code
Große	7	5,5	SE0820.M10
Size			
Grandeur	8	6,2	SE0820.M08
2 (M8-M20)	9	7,0	SE0820.M12
	10	8,0	SE0820.M10A
	11	9,0	SE0820.M14
	12	9,0	SE0820.M16
	14	11,0	SE0820.M18
	16	12,0	SE0820.M20
	18	14,5	SE0820.M24

Veličina	Ø (mm)	□ (mm)	code
Große	11	9,0	SE1433.M14
Size			
Grandeur	12	9,0	SE1433.M16
3 (M14-M33)	14	11,0	SE1433.M18
	16	12,0	SE1433.M20
	18	14,5	SE1433.M22
	20	16,0	SE1433.M27
	22	18,0	SE1433.M30
	25	20,0	SE1433.M33
	28	22,0	SE1433.M36

Veličina	Ø (mm)	□ (mm)	code
Große	18	14,5	SE2248.M24
Size			
Grandeur	20	16,0	SE2248.M27
4 (M22-M48)	22	18,0	SE2248.M30
	25	20,0	SE2248.M33
	28	22,0	SE2248.M36
	32	24,0	SE2248.M42
	36	29,0	SE2248.M45