

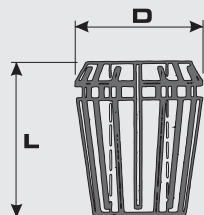


Elastične čahure 8° tip ER DIN 6499

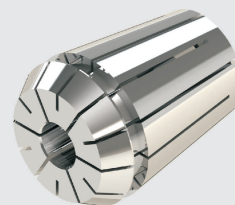
Spannzangen 8° ER/ESX, DIN6499

Collets 8° ER/ESX, DIN6499

Pinces de serrage 8° ER/ESX, DIN6499



ER	D	L
11 (424 E)	11,5	18
16 (426 E)	17	27
20 (428 E)	21	31,5
25 (430 E)	26	34
32 (470 E)	33	40
40 (472 E)	41	46



ER 11 (1-7mm)

Ø	code	Ø	code	Ø	code
1,0	ER11.010	3,5	ER11.035	6,0	ER11.060
1,5	ER11.015	4,0	ER11.040	6,5	ER11.065
2,0	ER11.020	4,5	ER11.045	7,0	ER11.070
2,5	ER11.025	5,0	ER11.050		
3,0	ER11.030	5,5	ER11.055		

ER 16 (1-10mm)

Ø	code	Ø	code	Ø	code	Ø	code
1,0	ER16.010	3,5	ER16.035	6,0	ER16.060	8,5	ER16.085
1,5	ER16.015	4,0	ER16.040	6,5	ER16.065	9,0	ER16.090
2,0	ER16.020	4,5	ER16.045	7,0	ER16.070	9,5	ER16.095
2,5	ER16.025	5,0	ER16.050	7,5	ER16.075	10,0	ER16.100
3,0	ER16.030	5,5	ER16.055	8,0	ER16.080		

ER 20 (2-13mm)

Ø	code	Ø	code	Ø	code
2,0	ER20.020	7,0	ER20.070	12,0	ER20.120
3,0	ER20.030	8,0	ER20.080	13,0	ER20.130
4,0	ER20.040	9,0	ER20.090		
5,0	ER20.050	10,0	ER20.100		
6,0	ER20.060	11,0	ER20.110		

ER 25 (2-16mm)

Ø	code	Ø	code	Ø	code
2,0	ER25.020	7,0	ER25.070	12,0	ER25.120
3,0	ER25.030	8,0	ER25.080	13,0	ER25.130
4,0	ER25.040	9,0	ER25.090	14,0	ER25.140
5,0	ER25.050	10,0	ER25.100	15,0	ER25.150
6,0	ER25.060	11,0	ER25.110	16,0	ER25.160

ER 32 (2-20mm)

Ø	code	Ø	code	Ø	code	Ø	code
3,0	ER32.030	8,0	ER32.080	13,0	ER32.130	18,0	ER32.180
4,0	ER32.040	9,0	ER32.090	14,0	ER32.140	19,0	ER32.190
5,0	ER32.050	10,0	ER32.100	15,0	ER32.150	20,0	ER32.200
6,0	ER32.060	11,0	ER32.110	16,0	ER32.160		
7,0	ER32.070	12,0	ER32.120	17,0	ER32.170		

ER 40 (3-26mm)

Ø	code	Ø	code	Ø	code	Ø	code
4,0	ER40.040	9,0	ER40.090	14,0	ER40.140	19,0	ER40.190
5,0	ER40.050	10,0	ER40.100	15,0	ER40.150	20,0	ER40.200
6,0	ER40.060	11,0	ER40.110	16,0	ER40.160	21,0	ER40.210
7,0	ER40.070	12,0	ER40.120	17,0	ER40.170	22,0	ER40.220
8,0	ER40.080	13,0	ER40.130	18,0	ER40.180	23,0	ER40.230
						24,0	ER40.240
						25,0	ER40.250
						26,0	ER40.260